

## About Dr. Matthew J. Lynch Reconstructive Surgeon

Matthew J. Lynch, MD, received his undergraduate degree Summa Cum Laude from Monmouth University, in NJ. He went on to obtain his medical degree from the University of Medicine



and Dentistry of New Jersey, where he was elected to the Alpha Omega Alpha Honor Society. Dr. Lynch then completed a combined General Surgery/Plastic Surgery Residency, with an emphasis on aesthetic and restorative breast procedures, at the Mount Sinai Medical Center in New York City. Dr. Lynch also completed a Fellowship in Advanced Microsurgery and Reconstructive Oncological Surgery at the world renowned MD Anderson Cancer Center in Houston Texas, where he demonstrated expertise in the latest technologies in breast reconstruction including Free Transverse Rectus Abdominis Myocutaneous (TRAM) Flap reconstruction. Dr. Lynch's expertise in microsurgery and reconstructive surgical techniques provides a proven advantage in cosmetic results.

Dr. Lynch is an active medical staff member, in excellent standing, at Robert Wood Johnson University Hospital at Hamilton, Capital Health Systems Hospitals, St. Francis Medical Center, University Medical Center of Princeton at Plainsboro, CentraState Medical Center, and Reliant Surgical Center.

## Other Procedures

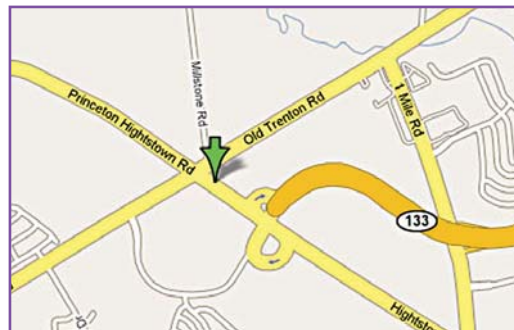
- Facial Rejuvenation Procedures:
  - BOTOX® Cosmetic
  - Restylane®
  - Radiesse™
  - Sculptra®
  - Juvederm®
  - Chemical Peels
  - Laser Skin Resurfacing
- Surgery for Male Gynecomastia



## MATTHEW J. LYNCH, MD



NEW JERSEY BREAST CENTER  
FOR PLASTIC & RECONSTRUCTIVE SURGERY



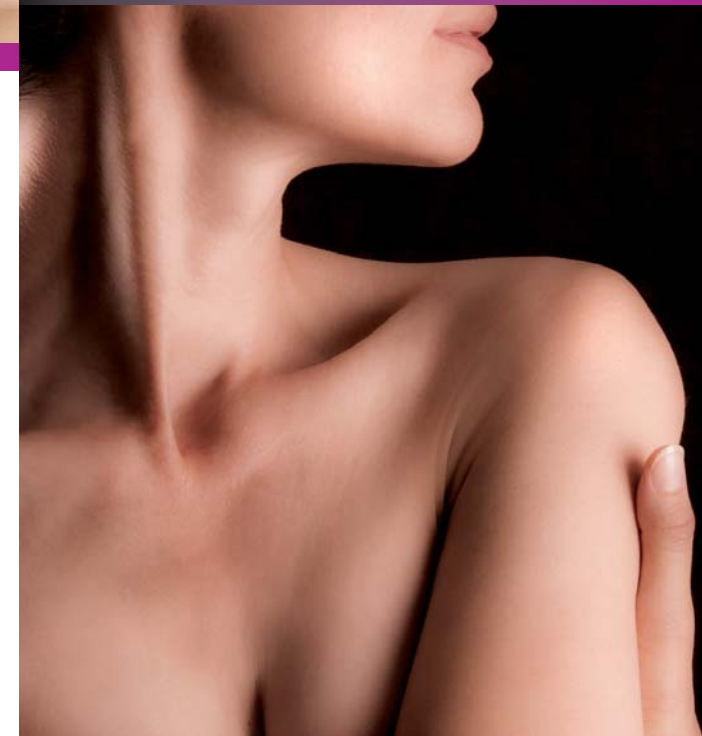
East Windsor Medical Commons  
300 B Princeton Hightstown Rd.  
Suite #101  
East Windsor, NJ 08520  
Tel: 609.448.6200 | Fax: 609.448.1800

## MATTHEW J. LYNCH, MD



NEW JERSEY BREAST CENTER  
FOR PLASTIC & RECONSTRUCTIVE SURGERY

RECONSTRUCTIVE SURGERY • BREAST LIFT



BREAST AUGMENTATION • BREAST REDUCTION

For the woman interested in reconstructive or cosmetic breast surgery, there are many things to consider, starting with finding the best surgeon.

*Consider This...*

## *An Introduction to*

# *New Jersey Breast Surgery*

Many women consider breast surgery for aesthetic, functional or even comfort reasons. It is most important to select a surgeon who is comprehensive, competent, compassionate, and who will spend meaningful time with you understanding your needs and discussing potential options and outcomes.

At the New Jersey Breast Center for Plastic and Reconstructive Surgery, Matthew Lynch, M.D. is dedicated to providing the most sophisticated techniques in cosmetic and reconstructive breast procedures. Dr. Lynch and the professional staff will support you with personalized and compassionate care and follow-up during your decision making, pre-procedure and post-procedure care.

Dr. Lynch's highly specialized skill and his passion for breast procedures and breast reconstruction has resulted in Dr. Lynch being the most requested plastic and reconstructive surgeon in the central New Jersey region for the most complex breast reconstruction cases. By concentrating on breast-related procedures, Dr. Lynch is able to obtain more predictable results and the most superior outcomes for his patients.

Dr. Lynch specializes in breast procedures. These include Breast Augmentation, Breast Lift, Breast Reduction and Breast Reconstruction.

The New Jersey Breast Center for Plastic and Reconstructive Surgery and the Princeton Rejuvenation Institute include a state of the art accredited operating suite and ambulatory care center. The Reliant Surgical Center and its professional and caring staff will assure that your procedure is completed in comfort and privacy.

## *Breast Augmentation (Augmentation Mammoplasty)*

Cosmetic breast surgery includes many individualized options for changing the size and shape of your breasts. Breast Augmentation with implants, or augmentation mammoplasty, is a surgical procedure that uses breast implants to enlarge and shape your breasts. The number of women having breast augmentation surgery has increased more than 400% in the last 10 years. Surgical techniques and breast implant technology have also improved dramatically. For most patients, breast augmentation is much less invasive, offers more options and provides a more satisfying outcome than ever before.

Dr. Lynch spends time individually with each woman considering breast augmentation to better understand her needs, desires and expectations. In addition, Dr. Lynch reviews the potential risks in detail with each woman considering breast augmentation surgery.

Breast augmentation surgery is a very personal decision. However, the most recent clinical data suggests that most women who undergo breast augmentation surgery are extremely happy with the breast augmentation, and gain an increased sense of self-esteem and self-confidence.



## *Breast Lift (Mastopexy)*

A breast lift, or mastopexy, may be performed to return a youthful shape and lift to breasts that have sagged as a result of weight loss, pregnancy, loss of the skin's natural elasticity or simply the effects of aging. Sometimes, the procedure may be combined with a breast augmentation for added breast fullness and shape.

## *Breast Reduction (Reduction Mammoplasty)*

For many women, large breasts may cause physical and emotional discomfort. The size and weight of large breasts may result in self-consciousness, improper posture, neck and back pain, indentations from bra straps, skin rashes, and even difficulty breathing. Breast reduction surgery, or reduction mammoplasty, is usually performed to provide relief from these symptoms. During the procedure, the breast volume is reduced and contoured to a more youthful position.

## *Breast Reconstruction*

For women with a congenital breast deformity, or for women who are faced with the decision for breast removal, modern surgical techniques—including microsurgery—make it possible to restore your body image and create a natural-looking breast after the mastectomy. Breast reconstruction will preserve the feminine silhouette and alleviate the need for an external prosthetic garment.

When you are considering options in breast reconstruction as part of the healing process from breast cancer surgery, Dr. Lynch works closely with your breast surgeon, your medical oncologist and radiation oncologist, at the time of your diagnosis as well as months and years after your cancer surgery, to ensure collaborative and comprehensive care.